

# MOUNTAINS & POTENTIAL ENERGY

192

1984 June 14

The amount of potential energy available from dropping mountains into valleys must be very high - and quite appreciable for dropping them into the sea (and down through the sea). So far it never seems to ~~be~~ have been exploited.

Also a big store in dropping bits of the moon down to the Earth - especially with a "tunnel" or "siphon" over the side of the moon's gravity well.

gravity wells:



# EYE DYES & ELECTRICITY

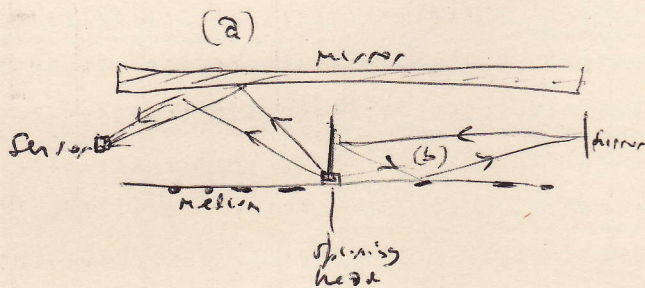
1984 June 5

When light falls on the eye chemicals in the retina, they must produce electricity to signal the brain (if light of correct frequency)

Can this mechanism be exploited to generate currents? Use in switching circuits [must be able to switch over in ca.  $\frac{1}{50}$  sec, as vision persistence is ca.  $\frac{25}{1000}$ ], or for power?

# OPTICAL DISC DRIVE

1984 June 4



Re the optical disc drive with fixed media on spinning head, there may be advantages in having a fixed plane mirror above the loadable medium (perhaps only a very small distance above) instead of having directly off the medium itself.

- pr. Maybe the sensor should be on the spinning axis too?